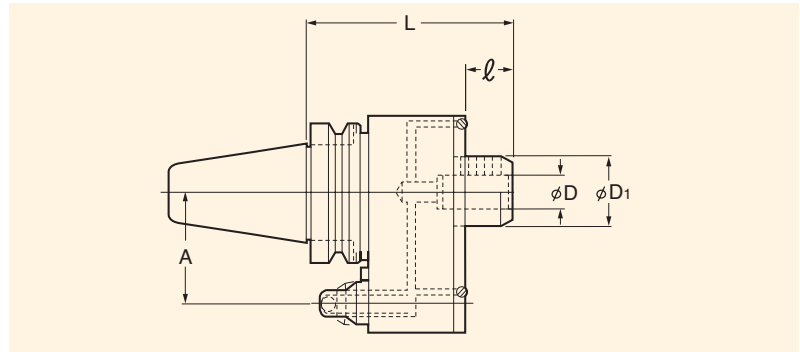


NIKKEN SIDE LOCK FLUIDHEADS™



Features

- Extends tool life
- Allows greater feeds and speeds
- Increases chip removal by delivering coolant at up to 400 PSI (maximum)
- Superb with indexable end mills and drills
- Compatible with most Automatic Tool Changers (ATCs)
- Set screw type holder uses reduction bushings to allow smaller sizes
- Two options for coolant flow
- Wrenches are included



Part Number	Taper	Weight (lbs.)	D	L	A	l	D1	Max-RPM
BT40-MOL5/8-130	BT40	7	5/8	5.118	60	1.339	1.358	5,500
BT40-MOL3/4-130	BT40	8	3/4	5.118	60	1.339	1.732	4,000
BT40-MOL1-130	BT40	8	1	5.118	60	1.339	1.732	4,000
BT40-MOL1.1/4-135	BT40	9	1-1/4	5.315	60	1.535	1.929	3,500
BT50-MOL5/8-150	BT50	16	5/8	5.906	82	1.339	1.358	5,500
BT50-MOL3/4-150	BT50	17	3/4	5.906	82	1.339	1.732	4,000
BT50-MOL1-150	BT50	17	1	5.906	82	1.339	1.732	4,000
BT50-MOL1.1/4-150	BT50	17	1-1/4	5.906	82	1.535	1.929	3,500
BT50-MOL1.1/2-160	BT50	18	1-1/2	6.299	82	1.732	2.323	3,000
CAT40-MOL5/8-140	CAT40	7	5/8	5.511	60	1.339	1.358	5,500
CAT40-MOL3/4-140	CAT40	8	3/4	5.511	60	1.339	1.732	4,000
CAT40-MOL1-140	CAT40	8	1	5.511	60	1.339	1.732	4,000
CAT40-MOL1.1/4-145	CAT40	9	1-1/4	5.709	60	1.535	1.929	3,500
CAT50-MOL5/8-150	CAT50	16	5/8	5.906	82	1.339	1.358	5,500
CAT50-MOL3/4-150	CAT50	17	3/4	5.906	82	1.339	1.732	4,000
CAT50-MOL1-150	CAT50	17	1	5.906	82	1.339	1.732	4,000
CAT50-MOL1.1/4-150	CAT50	17	1-1/4	5.906	82	1.535	1.929	3,500
CAT50-MOL1.1/2-160	CAT50	18	1-1/2	6.299	82	1.732	2.323	3,000

* Positioning block not included. Please refer to page 21.